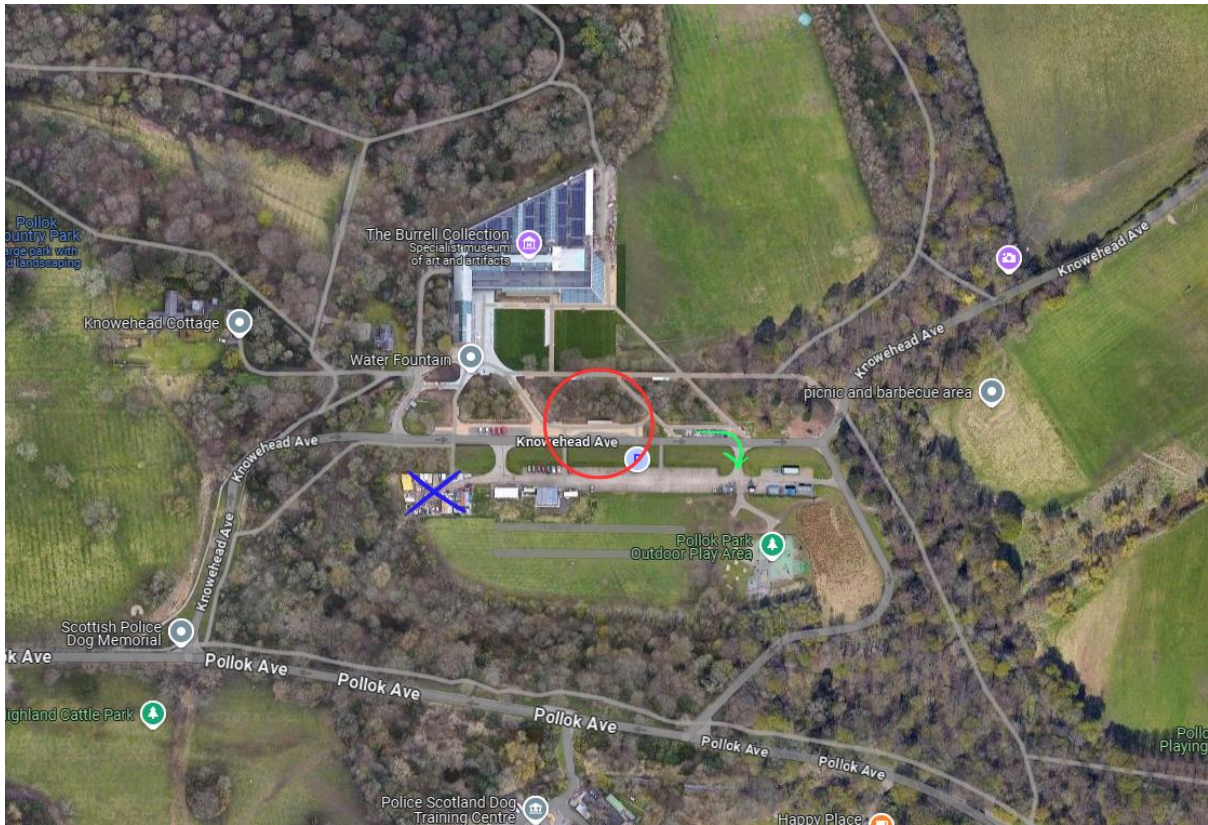


Coach Instructions

- Our regular park entrance is at Pollokshaws Road which takes you under a rail bridge with a height restriction of **12ft 6” (3.81m)**
- If this is too low for your vehicle, you may use the entrance via Dumbreck Road, near Junction 1 of the M77. The pink elephant sign is a notable landmark on one of the buildings at the park entrance, so if you see that, you’re in the right place!
- (To get to the Dumbreck Road entrance from the Pollokshaws Road entrance, head northeast on Pollokshaws Road/B769. The road turns left slightly and becomes Higgs Road. Continue and take a slight left onto Dumbreck Road, before finally turning left into the park entrance)
- Enter the park and follow the road all the way through. It will take you around the side of Pollok House and up to an open barrier
- Proceed through the open barrier down Pollok Avenue and at the signs, turn left for Burrell Collection
- Once at the Burrell Collection, coach parking can be found on the second right, taking you into the car park. Coach parking is at the far end of the car park. If you wish, on approach to the Burrell Collection you can pull into the left at our bus stop by the bike shed to allow your passengers to dismount, before proceeding into the car park (**note:** if the coach parking is closed for any reason (ie maintenance), the bus stop is used as temporary coach parking. Signage will advise)
- Parking is free for coaches in the designated coach parking area

The red circle is where you can pull in to let passengers alight, the green arrow shows you where to enter the car park and the blue X marks the coach parking area. If the coach parking is closed, you may park at the red circle.



Information for your passengers:

- We have two catering options – a coffee shop at the entrance and a much larger café/restaurant downstairs. If you have a large group, we recommend advising your passengers to use the restaurant. They serve a range of hot food but also teas, coffees and cakes.
- We have standard and accessible toilets at the main entrance by the coffee shop, and there are more downstairs by the restaurant
- Wheelchairs are available for use and can be booked out free of charge from reception
- We have a cloakroom at reception which is free of charge
- We have a free digital guide which can be downloaded here <https://burrellcollection.com/visit/burrell-and-bloomberg-connects/>
- The galleries are free to access, but donations are much appreciated